

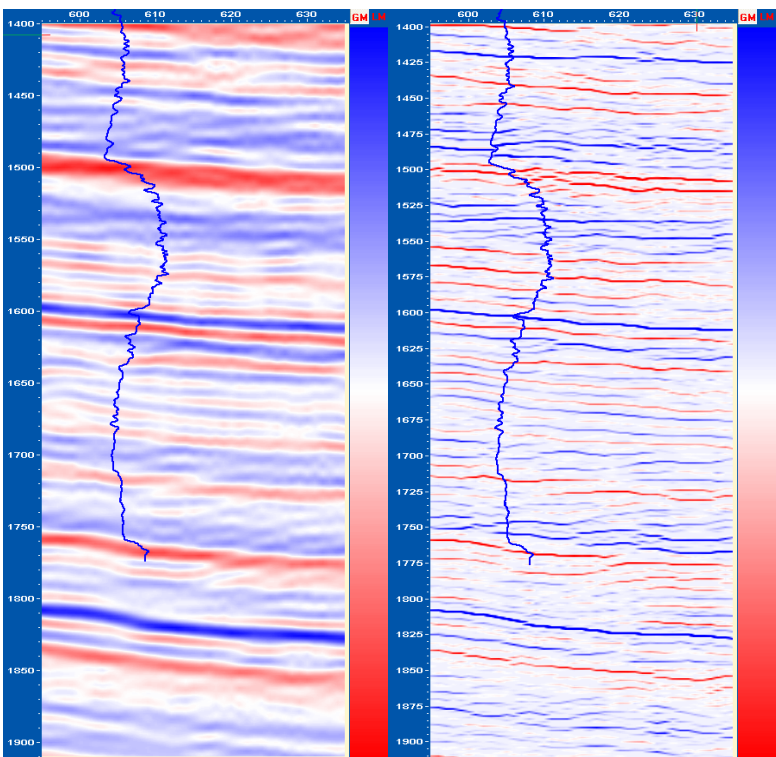


the answer lies within

reservoir services

Thin-bed reflectivity

Arcis offers thin-bed reflectivity inversion using ThinMAN™ (proprietary software of Fusion Petroleum Technologies Inc). This spectral inversion technique produces ultra-high resolution seismic data that enhances mapping. Thin-bed reflectivity removes the deleterious effects of the seismic wavelet that cause degraded resolution. Thin-bed reflectivity is performed without using well data, requires no *a priori* model, no interpreted horizons and no assumed reflectivity spectra. A single well control in the area helps with doing an effective job of quality control. Within this process there are numerous QC steps.



Log correlation with input

Log correlation with ThinMAN

